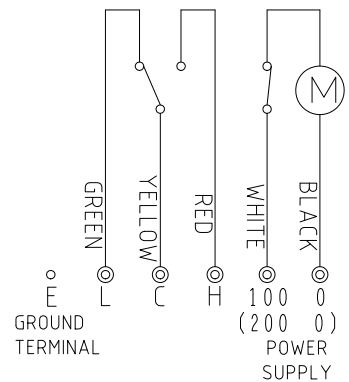


*Please specify the cable gland type.

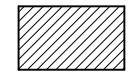
CABLE GLAND TYPE	Range of acceptable cable size
SXC-16B-1	φ 10~ φ 12
SXC-16B-2	φ 8~ φ 10

POWER SUPPLY	APPLICATION TYPE DESIGNATION
AC100V	PRL-5-WP
AC200V	PRL-5-VP

Q	NOTE	Q'ty	Q	NOTE	Q'ty
250			650		
300			700		
350			750		
400			800		
450			850		
500			900		
550			950		
600			1000		



MICRO SWITCH
 250V AC 6A RESISTIVE LOAD
 250V DC 0.5A RESISTIVE LOAD
 COLOR: 10YR7.5/14
 DETECTION TORQUE: About 10.0N·cm
 REVOLUTION: 1RPM
 AMBIENT TEMPERATURE: -10~+40°C



APPROVAL No.: T66814
 APPLICATION RANGE: d2G4
 EXPLOSION-PROTECTED CONSTRUCTION: d
 EXPLOSION CLASS: 2
 IGNITABILITY: G4

Q'ty:

図章 CHANGE NOTICE 承認 APPROVED 検図 CHECKED 製図 DRAWN ohno	第三角法 THIRD ANGLE PROJECTION	尺度 SCALE 1:2.5	日付 DATE Mar, 3, 2016	名称 TITLE PRL-G7-40 PADDLE TYPE LEVEL SWITCH
				図面番号 DRG. No. HR-91206
東和制電工業株式会社 TOWA SEIDEN INDUSTRIAL CO., LTD.				